

Installation Recomendations



Standard Panel Installation

Gutter Gekko Standard/Fascia Mount Panels are attached to both the front lip of the gutter and the fascia board which aids in strengthening the gutters. Standard Panels are ready to be installed right out of the box.

Standard Installation Fascia Mount



Insert the panel into the gutter and butt it directly against the end cap.



Fasten the front lip of the panels to the front of the gutter using Front Lip 1/2" Zip Screws. Use (4) Screws per panel.



Lift the rear of the panel to the proper height of 10°-15° and insert (4) Fascia 1 1/2" zip screws through the fascia bend of the panel and into the fascia.

Overlapping Panel Installation

Gutter Gekko panels can be installed two ways: with an overlap or without. Without using an overlap the panels are simply butted next to each other and fastened. Overlapping allows for the panels to be installed with a small portion of one panel overlapping the adjacent panel, which further protects against debris entering the gutter system.

Overlapping Panels



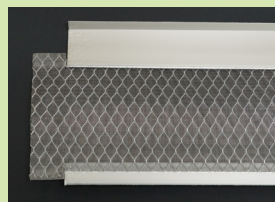
Measure 1" from whichever edge needs to overlap and mark the front lip.



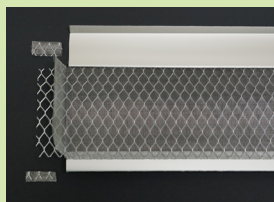
Using a square, transfer the mark to the back aluminum edge.



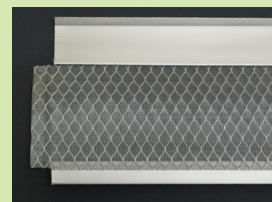
Snip along the lines, cutting through the solid aluminum front lip and rear of the panel.



Remove the aluminum front and back pieces, leaving only the expanded metal with stainless steel mesh.



Cut lengthwise along the end of the panel. Lift up the edge of the mesh to expose the expanded metal underneath and trim off 1/2".



Fold the remaining mesh over the expanded metal and pinch down with fingers. This will allow the panel to overlap the miter or adjacent panel.

End Cap Installation

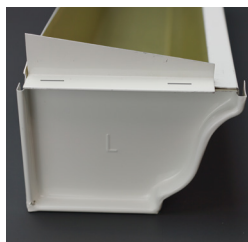
Standard End Caps



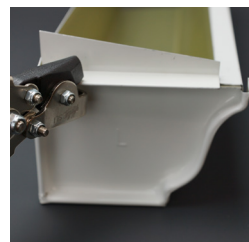
Factory-cut End Caps come in left and right versions.



Apply a small amount of sealant down the length of the crease.



Slide the end cap onto the edge of the gutter end cap.



Using End Cap Crimpers, crimp twice to secure to the gutter.



Gekko Miters

Gutter Gekko offers a variety of solutions for inside valleys. For mild to moderate waterflow, panels can be simply cut at a 45° angle to create an inside miter. For severe water flow in these areas, a factory cut inside miter can be used. This inside miter extends the surface area of the inside corner by 40% to handle more water, and will not collect debris like a diverter. Inside miters are available in two styles: Standard (fascia mount) and Flatback (under shingle).



Field Cut Inside Miter (45° Angle)



Factory Cut Standard Inside Miter (Fascia Mount)



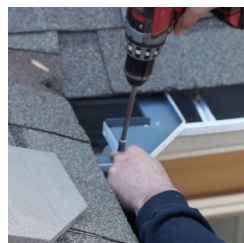
Factory Cut Flatback Inside Miter (Under Shingle)

Miter Installation

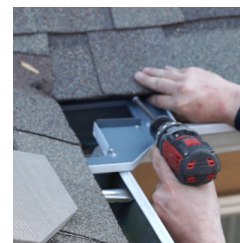
Standard Inside Miter (Fascia Mount)



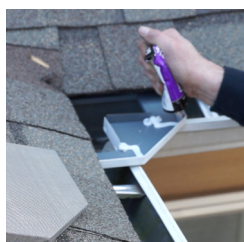
Apply a small amount of sealant to the top of the gutter on the front lip.



Insert the miter base and place (2) Miter 1/2" Zip screws at the front to secure.



Ensure that the miter base is level and fasten (2) fascia 1 1/2" Zip screws into the pre-drilled holes.



Seal all interior seams on the installed miter.



Insert the screen base and screw through the predrilled holes using (3) fascia 1/2" Zip screws.



Installation Tips from the Experts

General Installation

- Gutter Gekko is designed to be used on a variety of K-style, Half Round, and Box style gutters.
- Copper Gutters: When installing aluminum gutter guards with Copper gutters proper care must be taken to ensure the dissimilar metals do not come in contact. Use at least two layers of Corrosion Resistant Tape and Stainless Steel Screws to prevent contact. If there is a copper drip edge around the home, use a Corrosion Resistant Spray and spray all sides, including screws and screw holes. NOTE: GEKKO PANELS AND MITERS CANNOT BE INSTALLED IN CONJUNCTION WITH A COPPER ROOF.
- Screws: Zinc-Plated Steel Screws are recommended for all installations except with copper. Stainless steel screws must be used with copper gutters.
- New Gutter Installation: leave proper spacing for gutter guard panels when hanging new gutters

Standard Installation

- It may be necessary to rehang the position of the gutters to allow for the proper spacing for panel installation.
- Lift the panels at an angle of 10-15°. The exact measurement will be determined by the pitch of the roof. This step is important to ensure that water will not overshoot the panels.

Flatback Installation

- Micro-Mesh Products work best when water is forced through them (gravity fed). This is why the Flatback panels will need to be pre-bent before installation on almost all roofs. This bend allows the water to be forced through the Flatback panels due to the directional change of the roof pitch once it reaches the mesh. As a result, water will drive itself through this pitch change instead of following the slope and potentially over running the gutter.
- Pre-bending by hand can easily be done by just bending the panel at the point where the mesh and the expanded metal meet the solid aluminum on the back of the panel. This is a necessary step for the product to function as intended and only takes a few seconds per panel. If an under-shingle installation is required, then the product must never sit at a slope that is less than 10° or greater than 15°. Keep in mind that the angle of this bend will depend on the roof pitch.

Overlap

- Before installing any additional overlapping panels, put a drop of sealant along the front lip of the gutter between the seam of the overlapping panels. This prevents water from dripping along this seam.
- When installing the overlapping panels, place the panel into the gutter adjacent to the previously installed panel, keeping the overlap on top. This allows the front of the panel to sit on top of the gutter lip while the rear rests against the fascia or slides under the shingle, depending on installation.
- Install the overlapping panels following the installation instructions for the type of panels. For example, use (4) front lip zip screws on the front of the panel. Then use (4) fascia screws for standard panels, or simply slide the panel under the shingles for Flatback installation.

**Check our our website
for install videos!
Gutter Gekko.com**

